



Workflow Integration

Joseph Fibich, PharmD

Director, Pharmacy Services Program

CyncHealth



REVIEW THE
INFRASTRUCTURE

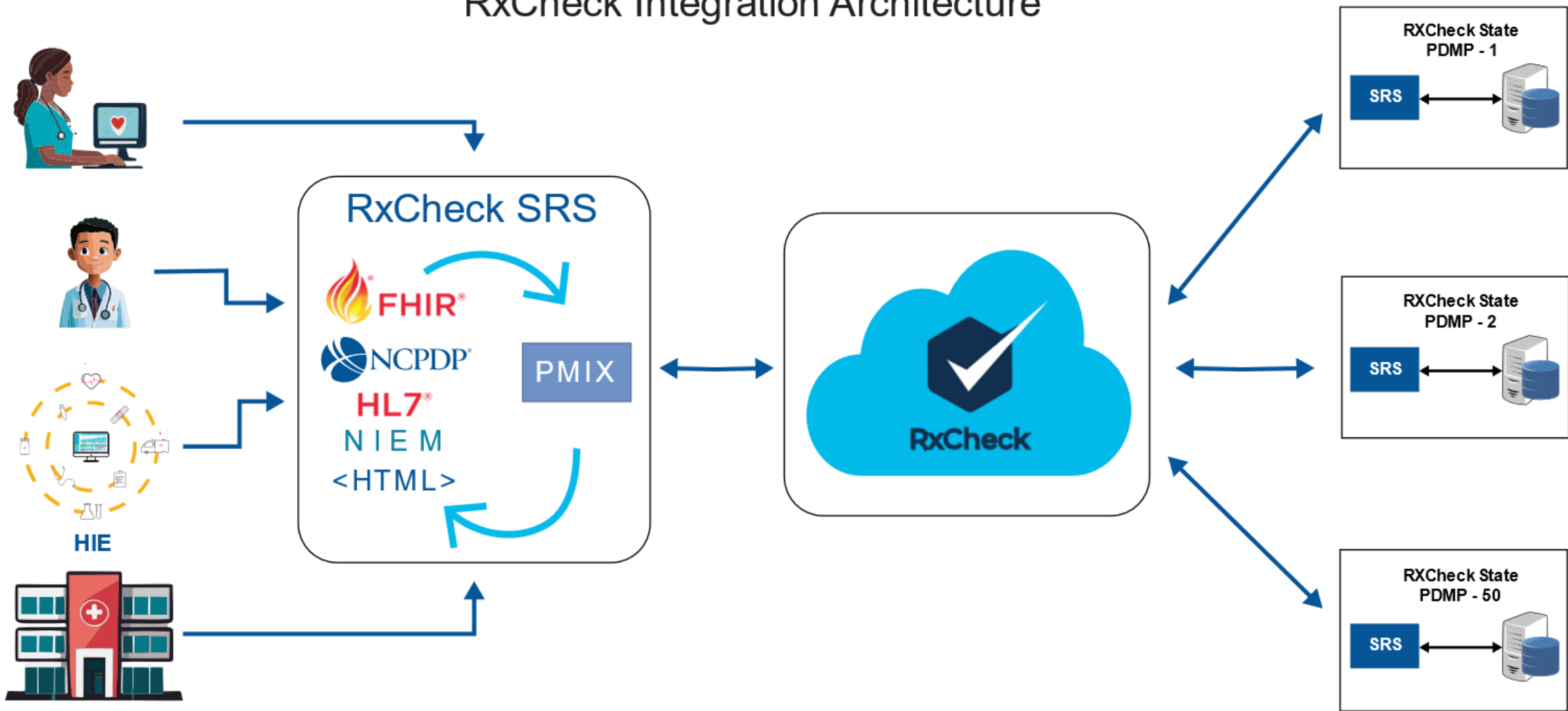


EXAMINE THE
INTEGRATION PROCESS

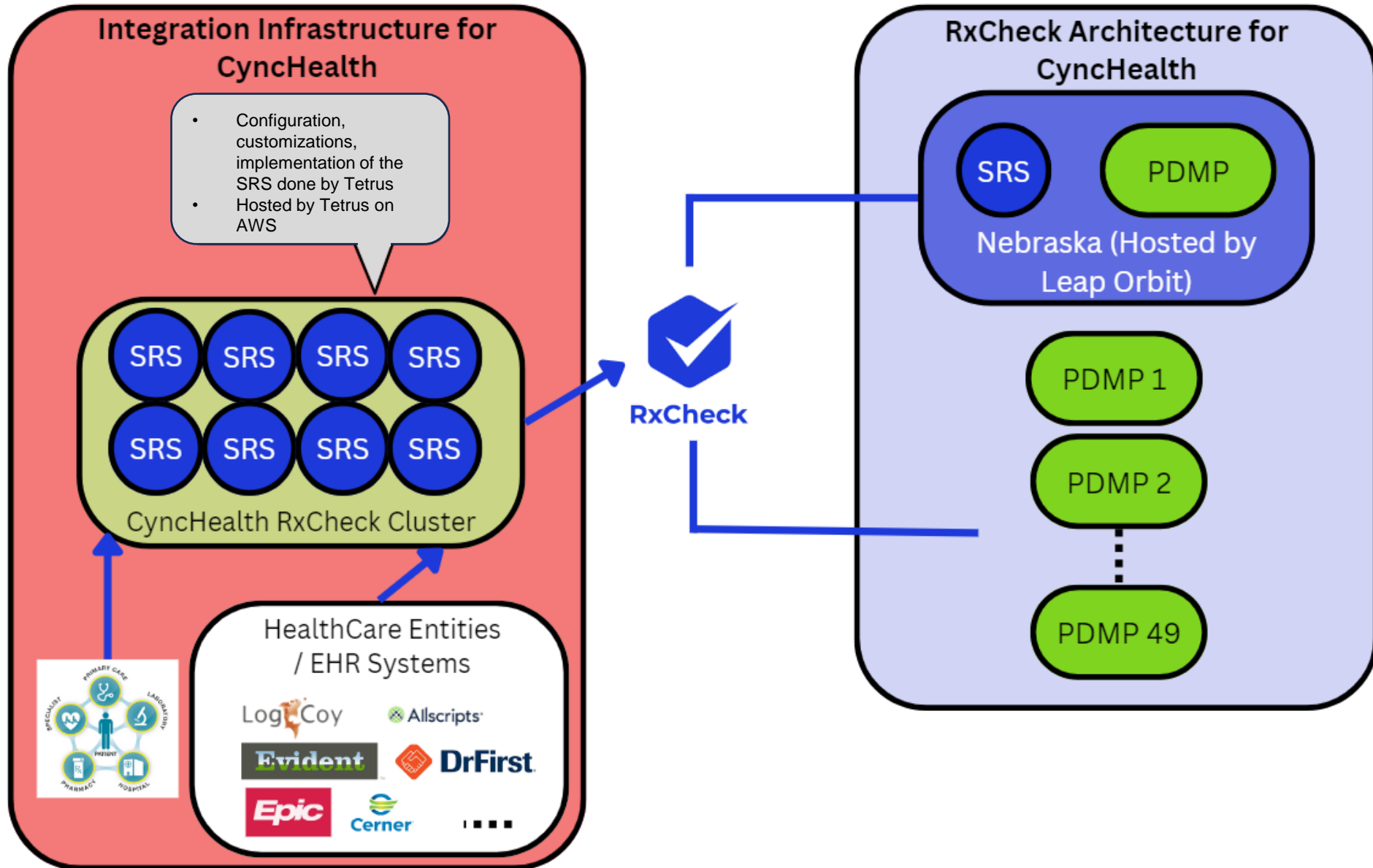


DISCUSS INTEGRATION
EXPECTATIONS

RxCheck Integration Architecture



Nebraska SRS Cluster Integration



- Offers security and efficiency, since Tetrus maintains all of the SRS servers for the facilities.
- Tetrus will install patches and upgrades, which prevent each facility from having to do this for their own
- Tetrus hosts the Nebraska SRS Cluster currently, but we are working to move the hosting internally.



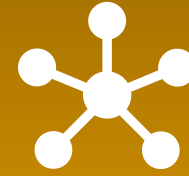
Facility reviews and provides updated list of locations, their EHR vendor, and 3rd party integrator



Legal/Account Management/Project Manager sign-off



Facility vendor to provide quote or SOW if necessary



Facility-Nebraska Data-sharing Agreement Addendum



Verification

We provide the facility with the list of locations that are covered under our agreements to verify these are the locations that will be covered with the integration.



Configurations

CyncHealth will work with the integration hub vendor (RxCheck) to complete the configurations our end.



Completed Integration

If using a third-party vendor, they will complete their piece of the integration.



Test Environment

The EHR vendor will build the integration in the test and production environments.



Schedule Testing Meeting

Once all pieces of the build are complete, CyncHealth will send the information on our testing patients and schedule the testing meeting.

Testing will occur from both the provider and the pharmacist role.

The three patients that will be tested will each provide results for a different scenario. The results will display:

- Patient Found/No Data Returned
- Medications returned including a compound and odd quantity for oxycodone.
- Patient found and returned medications including hydrocodone liquid. This patient has multiple addresses.

Following successful testing, CyncHealth can provide training material that will need to be customized to the specifications of the EHR and facility





CyncHealth and the facility query in the production environment from both the provider and pharmacist roles.



This meeting is two weeks after the integration is live and will review the usage at the facility. We will also:

- Answer questions that may have developed
- Verify use by current users
- Ensure there have been no user access issues
- Verify that the project completion form has been signed and returned.

The PDMP Integration allows providers and pharmacists to review the historic and current **controlled medications** that have been prescribed for their patient.

The information contained within the PDMP is data that is submitted by pharmacies from the medication that they dispense.

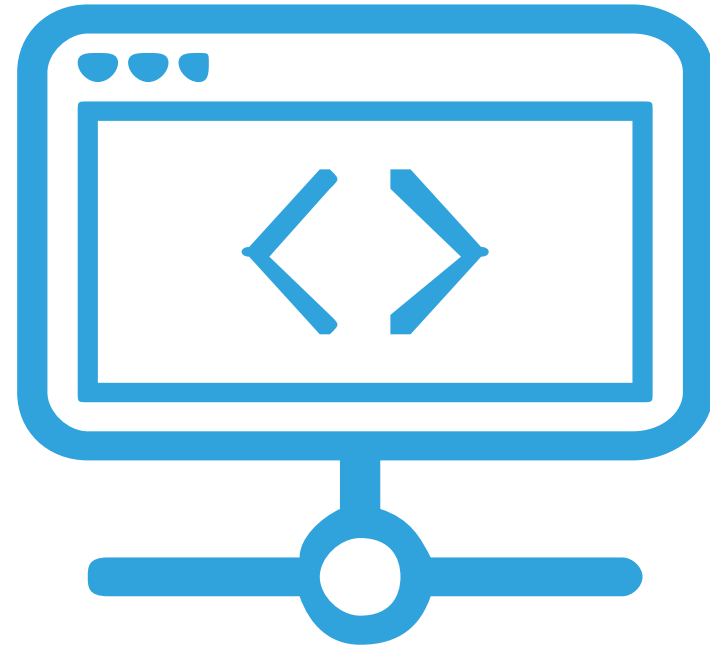
A project to upgrade patient matching is in progress.

Current patient-matching issues:

- Sue Smith vs. Susan Smith
- Incorrect DOB
- New Address

FHIR Integration is coming soon and will allow for **all medications**, not just controlled medications.

- Participation Agreements
- Verify Facility List
- Build the Integration
- Testing Meeting
- Go-Live Meeting
- Post Go-Live Meeting



Third-party integrators facilitate the integration connection for the EHR systems without the capability to independently connect



User access is determined by the roles established with the EHR



Each integrator has agreements with specific EHR and pharmacy software vendors that they support



When we add the facility to RxCheck, they will then add any sub-facilities and provision the endpoints and credentials for the facility



Facility will need to check with the 3rd party integrator for costs associated with the integration



Unique Requirements

- ❖ Roles and user access are determined by the roles setup within the EHR
- ❖ On the user side they provide a Dashboard to the facility based on their integration queries
- ❖ Patient matching based on Name and DOB. A pick list will display all the options for the requestor to review.

Unique Requirements

- ❖ Physician needs an NPI entered into their EHR profile for validation
- ❖ Pharmacist needs state license number and state entered into their EHR profile for validation
- ❖ All communication for the project is made within a DrFirst ticket
- ❖ Can integrate within the EHR and with DrFirst's e-prescribing med history portal
- ❖ Patient matching based on First Name, Last Name, Gender, Address, Zip, and DOB



Questions?